

CHANGEMAKERS!

IDEAS CAN CHANGE THE WORLD.

Transparency Image: *Picket Line Trouble*. Julian C. Wilson. 1964.
Associated Press Wirephoto. Gift of George Stephanopoulos. LUF 2021 1623.

VISITOR GUIDE

Ideas set in motion can change the world. This exhibition, drawn from LUAG's extensive collection, highlights multiple forms of cultural change making: the circulation of ideas, the evolving forces of labor and industry, advocacy through protest, fame, and of course the role of artists as the often "unacknowledged legislators of the world." **The exhibition includes interviews with local changemakers in the Lehigh Valley, gathered by Lehigh students.**

Visit the exhibition in the following on campus galleries & the South Bethlehem Greenway:

- Alumni Memorial Gallery, Alumni Memorial Building, Asa Packer Campus
- Dubois Gallery, Maginnes Hall, Asa Packer Campus
- Siegel Gallery, Iacocca Hall, Mountaintop Campus
- The Gallery at Rauch Business Center, Asa Packer Campus
- The Fairchild-Martindale Study Gallery, Asa Packer Campus

Change Makers! will be on view through May 23, 2025. The Siegel Gallery portion of the exhibition will close early on March 14, 2025 for the AAD Senior Thesis Exhibition. Join LUAG and our community partners for a variety of free educational programs, discussions and events. For more info visit www.luag.org.

SOUTH BETHLEHEM GREENWAY

Presented in partnership with Southside Arts District, LUAG hosts outdoor exhibitions on the South Bethlehem Greenway featuring reproductions of work from the *Change Makers!* and scannable video interviews with local change makers.

To view the entire outdoor exhibition, we recommend starting your self-guided tour at either S. New Street or Trone Street. (1.9 miles). Metered parking is available near the Greenway, as well as the S. New Street Parking Garage and Skate Plaza Parking Lot.

For more information, visit www.luag.org/exhibitions

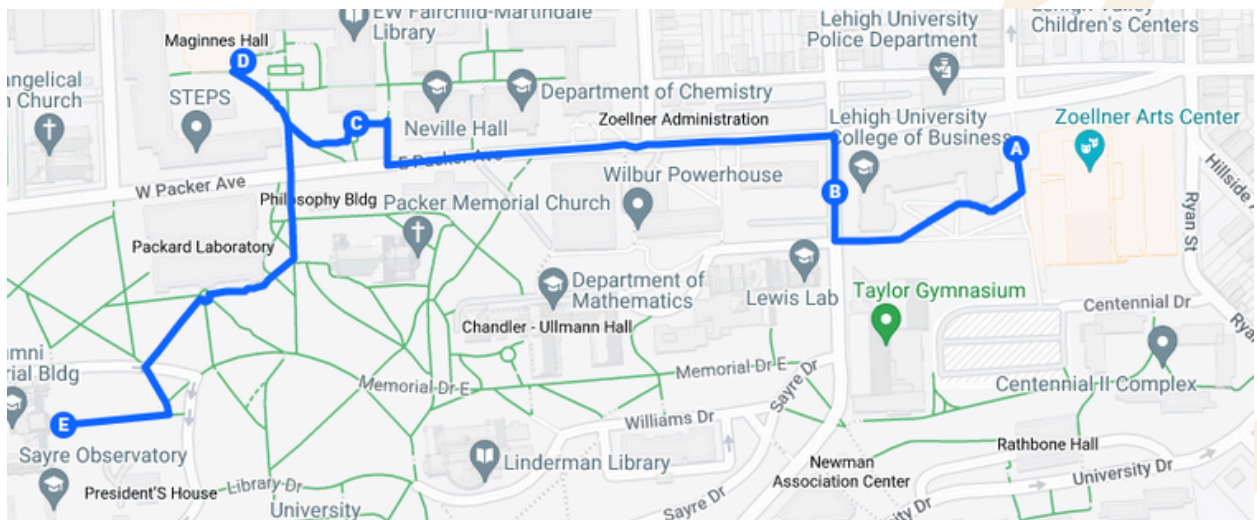
CHANGE MAKERS!
IDEAS CAN CHANGE THE WORLD.



Bodies of Knowledge, 2023-24, on the South Bethlehem Greenway ▶

FIND OUR EXHIBITIONS

ASA PACKER CAMPUS



(A) LUAG Main Galleries (B) The Gallery at Rauch Business Center, Rauch Business Center (C) The Fairchild-Martindale Library Study Gallery (D) Dubois Gallery, Maginnes Hall (E) Alumni Memorial Gallery, Alumni Memorial Building. Siegel Gallery, Iacocca Hall, Mountaintop (not shown).

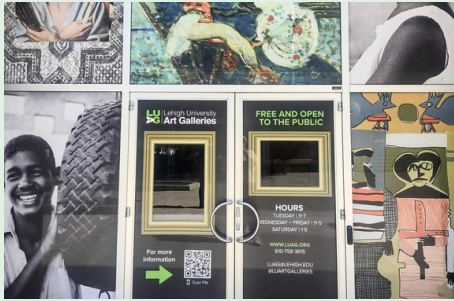


Scan the QR code for walking and driving directions

Lehigh's campus has many hills, stairs and old buildings. If you have questions about accessibility in our spaces, please feel free to **contact Elise at ejs421@lehigh.edu or 610-758-6882.**



LUAG MAIN GALLERIES, ZOELLNER ARTS CENTER



Entrance on East Packer Avenue

The LUAG Main Galleries encompass our rotating exhibition spaces as well as The Lower Gallery: Selections from the Permanent Collection. We are located inside the first floor of Zoellner Arts Center on East Packer Avenue.

More information about the exhibitions below can be found on our website at www.luag.org.

ART, ARCHITECTURE AND DESIGN DEPARTMENT EXHIBITION

On view January 28, 2025 - May 23, 2025


The multidisciplinary practitioners who form the core of Lehigh University's Department of Art, Architecture and Design share a common teaching philosophy centered on experiential learning and critical visual thinking. This exhibition features: Anna Chupa, William Crow, Amy Forsyth, Ho'o Hee, Wes Heiss, Wes Hiatt, Jenny Kowalski, Kevin Lahoda, Maurizio Masi, Deirdre Murphy, Nik Nikolov, Alina Tenser, Jason Travers. and Christina Chi Zhang.

LUAG LOWER GALLERY: SELECTIONS FROM THE PERMANENT COLLECTION



Featuring selections from Lehigh University Art Galleries' permanent collection of over 20,000 works of art, this exhibition highlights works from various periods and cultures!

New works on view as of Fall 2024.

Scan the QR code to see what's been installed! 



*Virgen de los Ángeles (Virgin of the Angels)*LUF 97 1008 118/122B/Box 1010
Garduño, Flor b. 1957 Mexican Mexico 1987ormation

LUAG LAB, INSIDE LUAG MAIN GALLERIES

What is Reality? A First-Year Seminar

In Fall 2024, Professor Almut Hupbach (Psychology) and Professor of Practice William Crow (Art, Architecture and Design) designed and co-taught *What is Reality?* Thirty-two first-year students interrogated this timeless question through art and museum experiences, exploration of cognitive processes, and hands-on experiential learning. Learn more on our website at www.luag.org/exhibitions.

OUTDOOR SCULPTURE COLLECTION



George Segal, *Woman on a Park Bench*, 1998 / (Cast 2005), Painted bronze, metal bench

Lehigh University is home to over 50 outdoor sculptures located across three campuses!

Scan the QR code and view outdoor sculptures from the collection on the Lehigh Campus Map by selecting the interactive "Art on Campus" layer.



VISIT THE SOUTHSIDE!

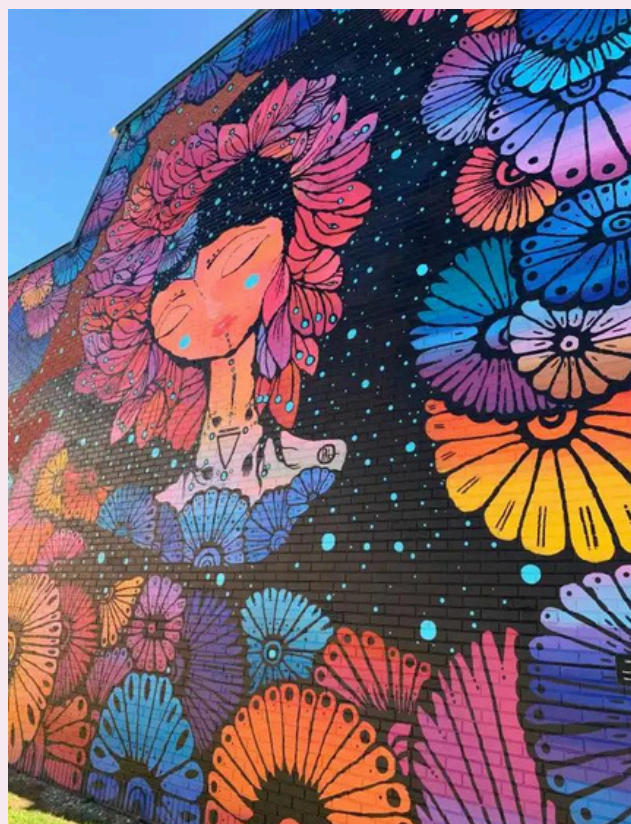
Explore South Bethlehem before or after your visit!

Check out some of our staff's favorite spots for coffee, lunch, drinks and such in South Bethlehem!



There's lots of art in South Bethlehem! **Urban Arts Trail** is a 2.75 mile experience that sprawls across Bethlehem's SouthSide Downtown business district and features nearly 40 works of public art.

You can visit **SouthSideArtsDistrict.com** for a full list of eateries, places to visit, things to do, and more!




Calma by Pau Quintanajournal (detail)


Add your voice to the conversation!



Share your art and photos with us when you visit our galleries!
For a chance to be featured on our Instagram tag @luartgalleries

 www.luag.org

 (610) 758-3615

 inluag@lehigh.edu