
BEHIND THE GAZE

April



2022

Capstone Project

Hannah Siesel



HANNAH SIESEL

Major: Graphic Design
Minor: Studio Art



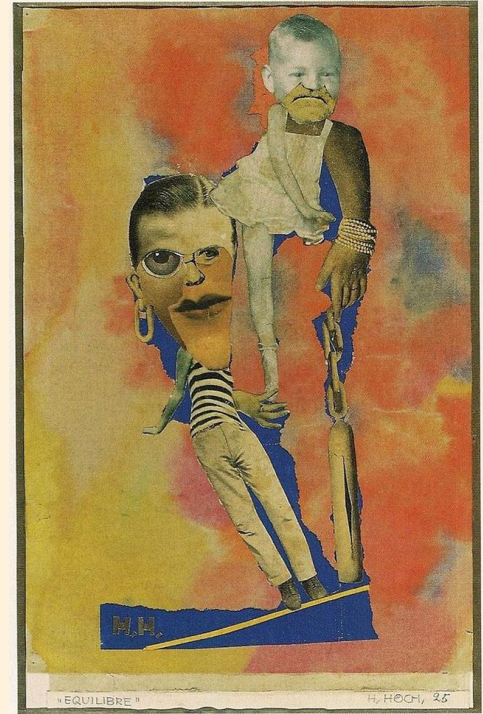
HISTORY OF COLLAGE

- 1910: “a creative work that resembles such a composition in incorporating various materials or elements”
- 1907: Cubism
- Founding figures: Georges Braque and Pablo Picasso



DADAISM

- 1920s: Based on deliberate irrationality and challenging the traditional values of art
- Use of normal materials
- Hannah Hoch



SURREALISM

- 1920s: Relied on the subconscious to produce one of a kind assemblages made of photographs, illustrations, colored paper, and paint
- Bring imagination to life and study the unconscious in its dream like state
- John Stzekar



WOMAN COLLAGE ARTISTS

- Use collage to express ideas such as women's rights, femininity, freedom, and gay rights
- Collage has been used as a powerful way to express creativity and examine gender and identity
- Hannah Höch and Eileen Agar



HANNAH HOCH

- Known for her political collages and using images and text from mass media to analyze culture and social constructs of women
- One of the few recognized female members of the Dada movement
- Strong influence on modern collage art



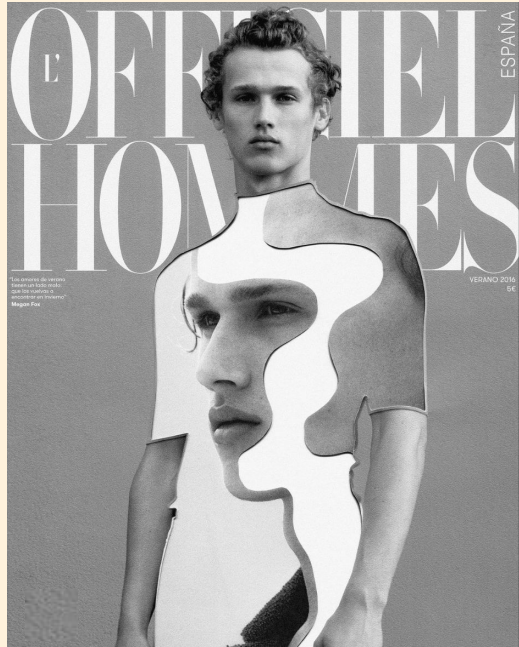
COLLAGE IN FASHION

- Article: “Hannah Hoch and Collage as Protest”
- Hints of the bizarre
- “The fragmentation you see in fashion editorials today are not simply derivatives of papercut collages, they harken back to these very movements in Modern Art”

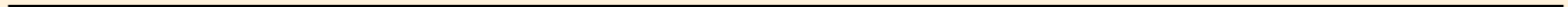
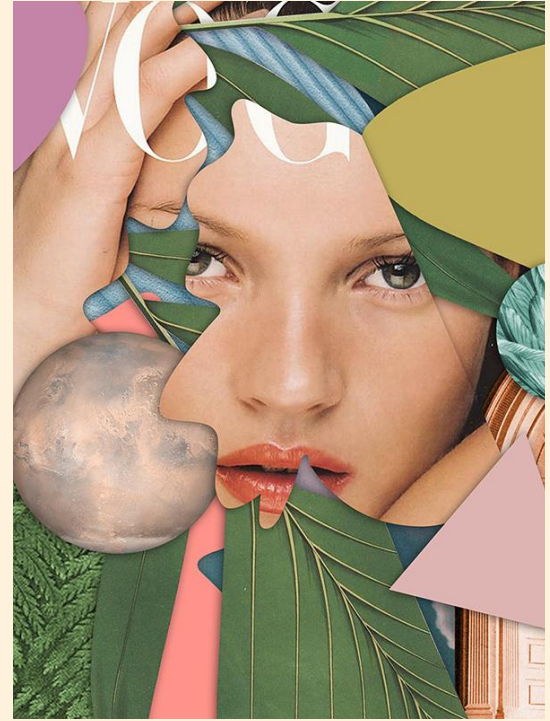




PABLO CUADRO

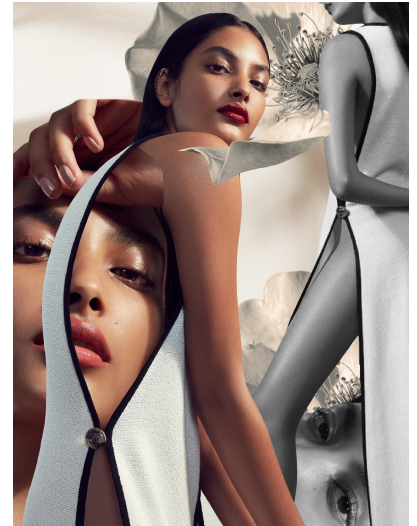
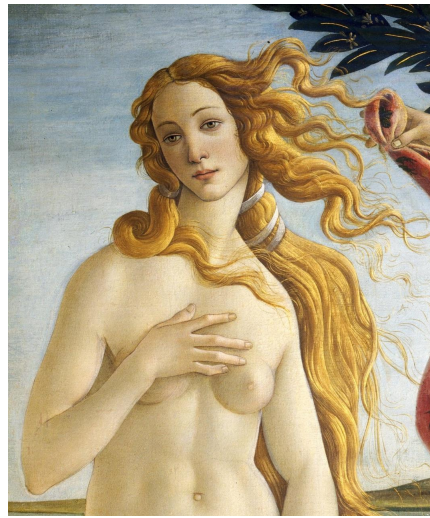


ROSANNA WEBSTER

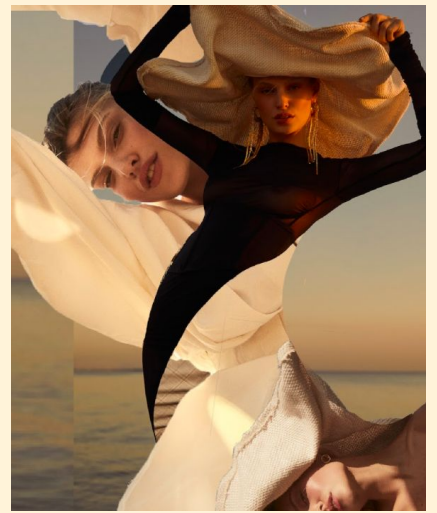
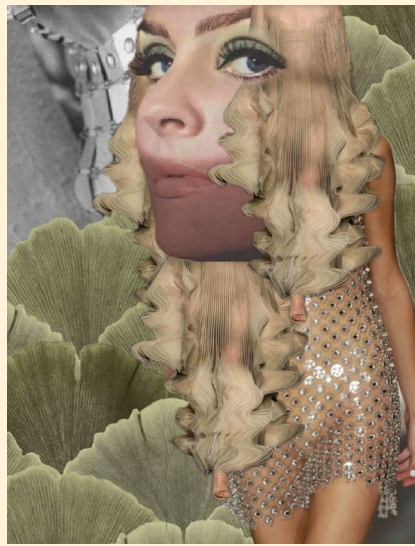


THE FEMALE GAZE

- The way that women are portrayed through the eyes of a woman instead of a man.
 - In the male gaze the woman is visually positioned as an object which empowers men and objectifies women
 - In art history, women are often depicted in a passive state, looking away from the viewer
 - However, in my work the women are looking directly at the viewer to reclaim agency and celebrate female power
-



PAST WORK





STYLE & DESIGN

- Color palette
- Embedded and overlapped layers



STYLE & DESIGN

- Space & harmony
- Organic shapes



STYLE & DESIGN

- Size and proportion
- Gradient maps



STYLE & DESIGN

- Flower elements to add dimension
- Black & white



THANK YOU

Find me at: [HannahSiesel.com](https://www.HannahSiesel.com)
