



MATT SNYDER. *Noir: The First Case*, 2021.
Ink and watercolor pen.

"Of all the styles, drawing is the one
I connect with the most."

- Matt Snyder



LESTER JOHNSON. *Untitled*, 1966. Pastel on paper. Ralph L. Wilson '21
Endowment II Purchase. LUG 88 1003

THINKING THROUGH DRAWING

Works on Paper, Drawings & Sketchbooks
From the Collection and Community

LUAG Main Gallery, Zoellner Arts Center &
The South Bethlehem Greenway

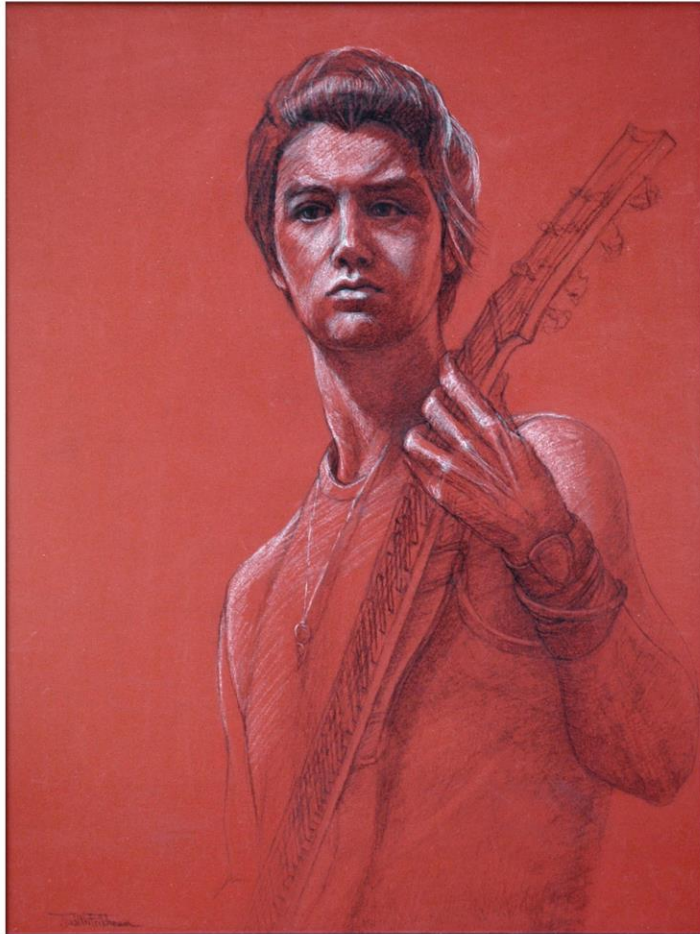
www.luag.org

ARTS
pennsylvania
COUNCIL ON THE ARTS

Point the
camera on
your phone
here to learn
more!



LUAG | Lehigh University
Art Galleries



JUDITH FRITCHMAN. *Taking the Lead*, 2016.
Conte pencil and pastel on red-orange paper.

"Drawing is a sensory process."

- Judith Fritchman



WILLIAM RYLAND. *Study of An Old Man*, n.d. Crayon-like
print with sepia. Gift of Viola Fearnside. LUG 82 5013

THINKING THROUGH DRAWING

Works on Paper, Drawings & Sketchbooks
From the Collection and Community

LUAG Main Gallery, Zoellner Arts Center &
The South Bethlehem Greenway

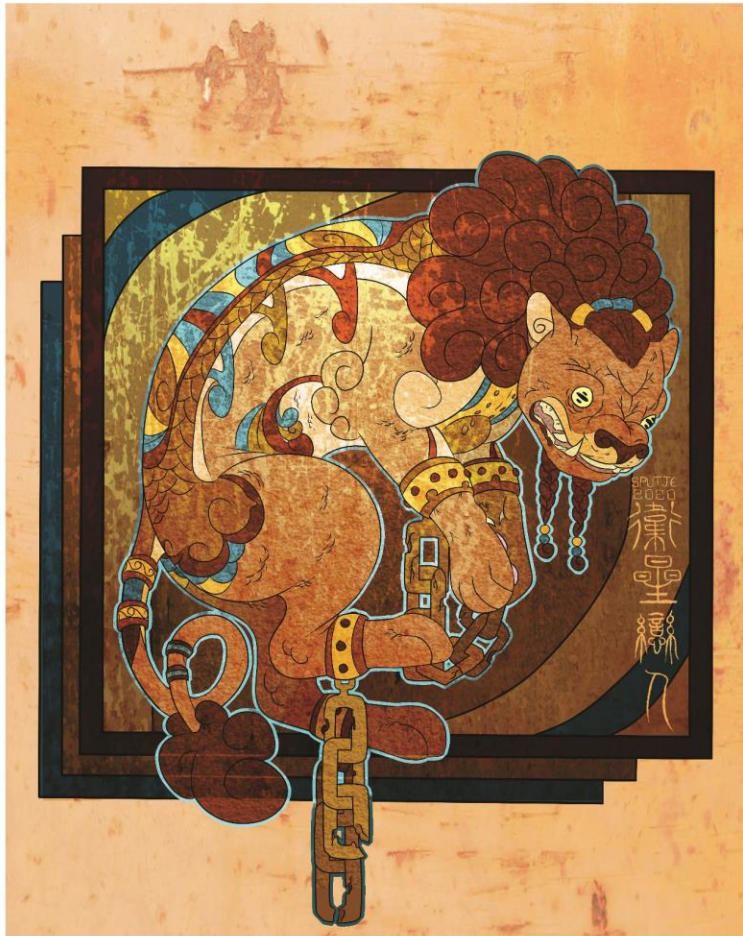
www.luag.org



Point the
camera on
your phone
here to learn
more!



LUAG | Lehigh University
Art Galleries



ZENA MEIGHAN. *Untitled*, 2020. Digital.

"Drawing is when you make your
mark on the world."

- Zena Meighan



JAN ANTON GAREMYN. *Lion*, n.d. Drawing, black and white chalk.
Gift of Viola Fearnside. LUG 82 5041

THINKING THROUGH DRAWING

Works on Paper, Drawings & Sketchbooks
From the Collection and Community

LUAG Main Gallery, Zoellner Arts Center &
The South Bethlehem Greenway

www.luag.org



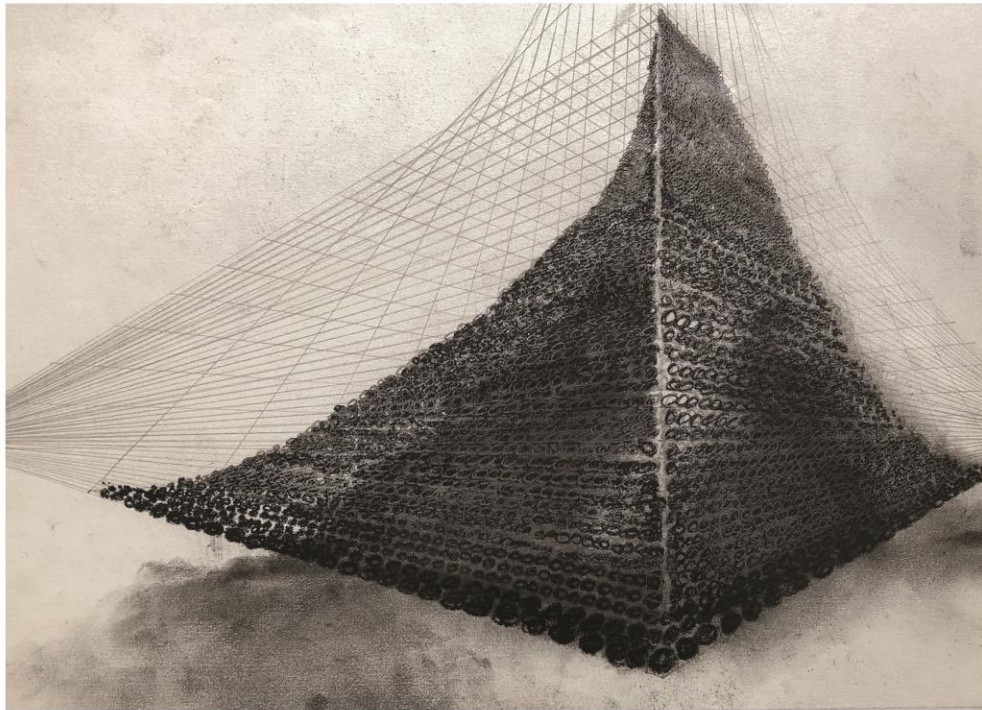
Point the
camera on
your phone
here to learn
more!



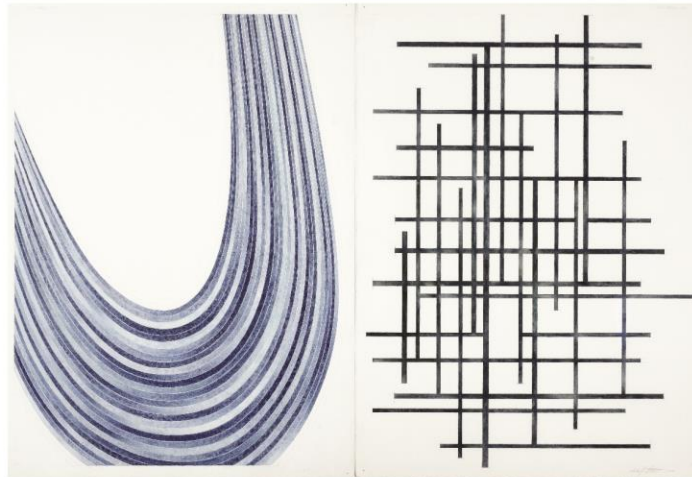
LUAG | Lehigh University
Art Galleries

"Drawing is a tangible expression
of one's inner dialogue."

- Philip Schilling



PHILIP SCHILLING. *Karmic Mountain*, 2007. Pencil and charcoal.



LESLIE FLETCHER. *Blue Curve and Straight Blue Lines*, 2008.
Graphite pencil, powdered pastel, watercolor wash.
Exchange Acquisition. LUG 2014 1001

THINKING THROUGH DRAWING

Works on Paper, Drawings & Sketchbooks
From the Collection and Community

LUAG Main Gallery, Zoellner Arts Center &
The South Bethlehem Greenway

www.luag.org



LUAG | Lehigh University
Art Galleries

"With drawing we can think
through our hands."

- Veronica Lawlor



VERONICA LAWLOR. *Temple of Heaven: Interior/ Exterior*, 2003.
Pen and ink, brush with acrylic paint.



CAO YINGYI. *Home in Deepening Shades of Mist & Clouds*,
1986. Watercolor. Gift of the Artist. LUG 89 1015

THINKING THROUGH DRAWING

Works on Paper, Drawings & Sketchbooks
From the Collection and Community

LUAG Main Gallery, Zoellner Arts Center &
The South Bethlehem Greenway

www.luag.org



Point the
camera on
your phone
here to learn
more!





SAMMY WENDLAND. *Senior Moment*, 2021. Colored Pencil.

"Drawing is transcribing one's ideals and ideas, for the rest of the world."

- Sammy Wendland



GEORGE SEGAL. *Paint Cans, Krylon and Nails*, 1983. Pastel on paper.
Gift of the George and Helen Segal Foundation. LUG 2019 1011

THINKING THROUGH DRAWING

Works on Paper, Drawings & Sketchbooks
From the Collection and Community

LUAG Main Gallery, Zoellner Arts Center &
The South Bethlehem Greenway

www.luag.org

ARTS
pennsylvania
COUNCIL ON THE ARTS



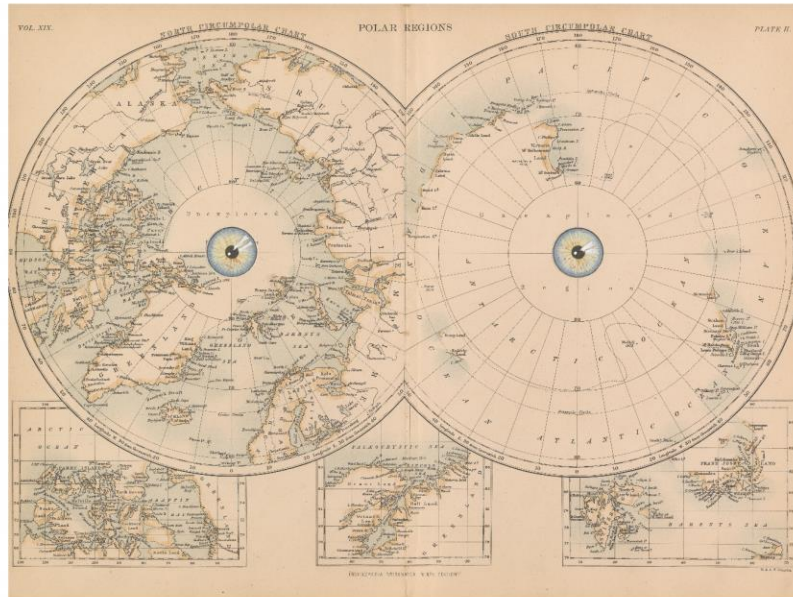
LUAG | Lehigh University
Art Galleries



S.J. BUFFINGTON. *Head Island*, 2021. Ink with digital color added.

"Drawing is the act of creating."

- S.J. Buffington



SARAH STENGLE. *Polar Regions*, 1999. Collage, ink and watercolor.
Gift of Craig Jordan and Mary Murray. LUG 00 1000

THINKING THROUGH DRAWING

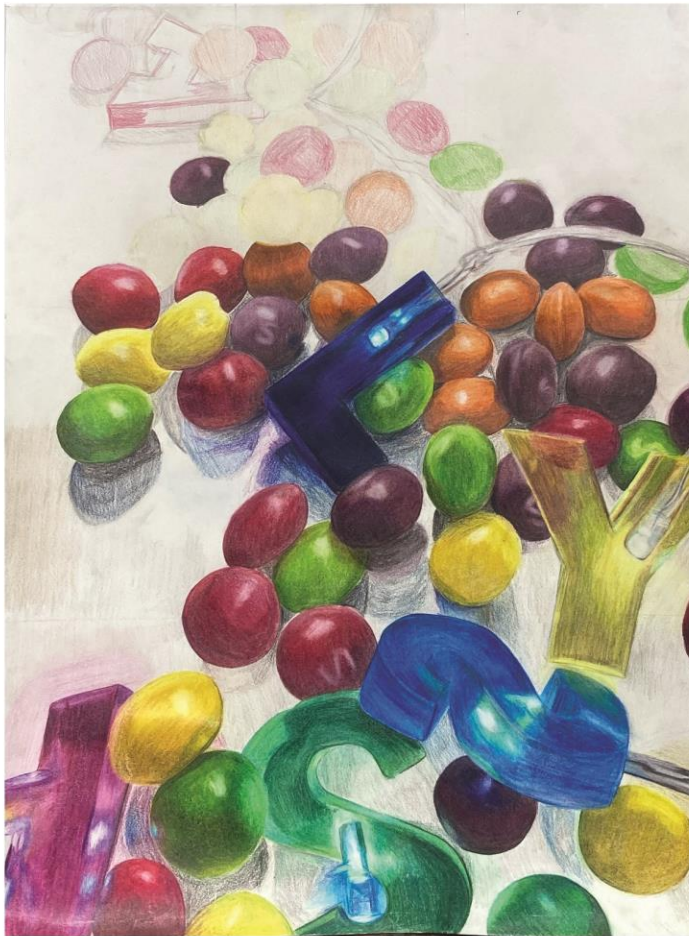
Works on Paper, Drawings & Sketchbooks
From the Collection and Community

LUAG Main Gallery, Zoellner Arts Center &
The South Bethlehem Greenway

www.luag.org



LUAG | Lehigh University
Art Galleries



ALYSSA KLINGER. *Color Mania*, 2021. Colored Pencil.

"Drawing can be used to capture anything."

- Alyssa Klinger



DALIA RAMANAUSKAS. *Rain Hats*, n.d. Pen and ink.
Gift of A. Haigh Cundey. LUG 78 1001

THINKING THROUGH DRAWING

Works on Paper, Drawings & Sketchbooks
From the Collection and Community

LUAG Main Gallery, Zoellner Arts Center &
The South Bethlehem Greenway

www.luag.org



Point the
camera on
your phone
here to learn
more!





ECHO RAY MCCALLISTER, *Untitled*, 2002. Graphite and marker on paper. Ralph L. Wilson '21 Endowment II Purchase. LUP 03 1004



LARKIN DEAL, *Ladders*, 2019. Crayon, stamps.

"Drawing is a way to express one's feelings."

- Larkin Deal

THINKING THROUGH DRAWING

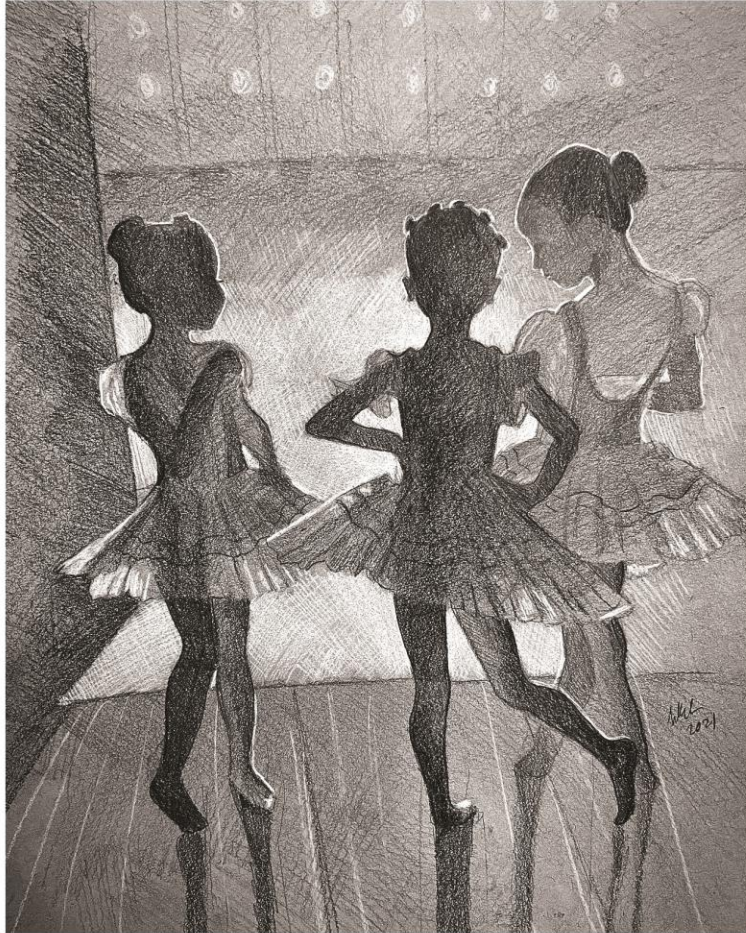
Works on Paper, Drawings & Sketchbooks
From the Collection and Community

LUAG Main Gallery, Zoellner Arts Center &
The South Bethlehem Greenway
www.luag.org



Point the
camera on
your phone
here to learn
more!

Lehigh University
Art Galleries



LAUREN KUHN. *Backstage Trio*, 2021.
Pencil and white chalk on gray toned paper.

"Drawing is getting back to the basics -just
a pencil and paper."

- Lauren Kuhn



EDITH LAWRENCE KING. *Garden of the Villa Solferino, Florence, Italy*, 1912.
Watercolor. Gift of Michael Merson in Honor of Ahsha Merson. LUP 2019 1001

THINKING THROUGH DRAWING

Works on Paper, Drawings & Sketchbooks
From the Collection and Community

LUAG Main Gallery, Zoellner Arts Center &
The South Bethlehem Greenway

www.luag.org

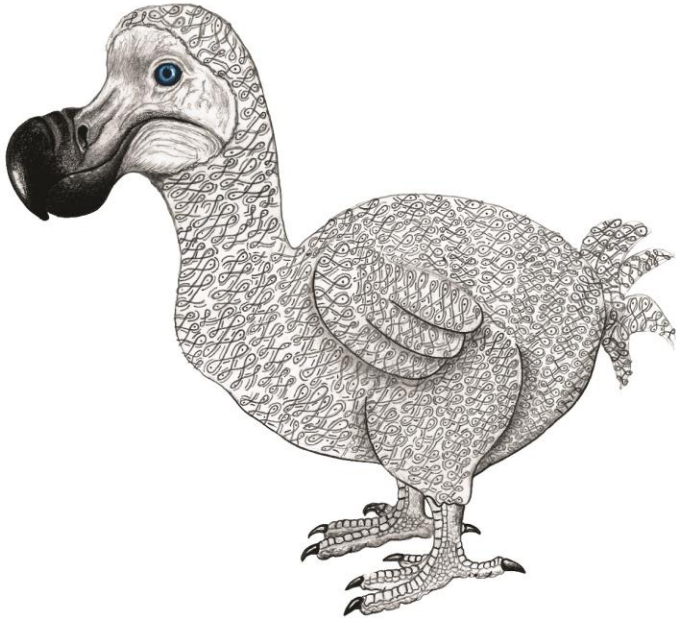


Point the
camera on
your phone
here to learn
more!



"Drawing is understanding the world
around me."

- Monica Salazar



MONICA D. SALAZAR. *Doodling the Dodo*, 2017. Graphite on paper.



ARTHUR B. DAVIES. *Barn Swallow*, 1885. Painting, watercolor, gouache, pencil. Gift of Erica Davies. LUP 71 1015

THINKING THROUGH DRAWING

Works on Paper, Drawings & Sketchbooks
From the Collection and Community

LUAG Main Gallery, Zoellner Arts Center &
The South Bethlehem Greenway

www.luag.org


pennsylvania
COUNCIL ON THE ARTS



 | Lehigh University
Art Galleries

"Drawing or doodling is immersing
ourselves in deep imagination."

- Martha Lubow



MARTHA LUBOW. *Diamonds in Your Eyes*, 2021. Markers and paper.



ANITA WESCHLER. *Stage Designs*, n.d. Watercolor on paper.
Gift of the Estate of Anita Weschler. LUG 02 1011

THINKING THROUGH DRAWING

Works on Paper, Drawings & Sketchbooks
From the Collection and Community

LUAG Main Gallery, Zoellner Arts Center &
The South Bethlehem Greenway

www.luag.org



LUAG | Lehigh University
Art Galleries



ALEXIA DREY. *A Day at Bake Oven Knob*, 2020. Charcoal.

"Every drawing tells a different story."

- Alexia Drey



ROELANDT SAVERY. *Landscape with Mountains and Water Mill*, n.d.
Ink wash drawing in sepia. Gift of Viola Fearnside. LUG 82 5026

THINKING THROUGH DRAWING

Works on Paper, Drawings & Sketchbooks
From the Collection and Community

LUAG Main Gallery, Zoellner Arts Center &
The South Bethlehem Greenway

www.luag.org



Point the
camera on
your phone
here to learn
more!



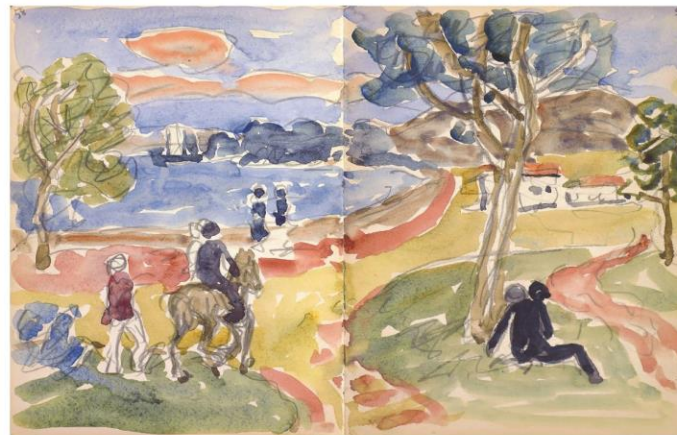
LUAG | Lehigh University
Art Galleries

"Drawing is any type of mark making."

- Katie Arnold



KATIE ARNOLD. *Pink moon*, 2019. Pen, pencil, watercolor.



MAURICE PRENDERGAST. *Sketchbook*, 1920-23. Pencil, crayon, and watercolor on paper. Gift of J. Douglas Breen '68 In Honor of 50th Class Reunion. LUG 2017 1018

THINKING THROUGH DRAWING

Works on Paper, Drawings & Sketchbooks
From the Collection and Community

LUAG Main Gallery, Zoellner Arts Center &
The South Bethlehem Greenway

www.luag.org



LUAG | Lehigh University
Art Galleries

"Drawing is making marks."

- Tony Sienzant



TONY SIENZANT. *CHESS ON THE MOON*, 1976. Pen and ink.



BARBARA KOZERO. *Parade*, 1979. Graphite on paper.
Fine Art Purchase. LUG 80 1400

THINKING THROUGH DRAWING

Works on Paper, Drawings & Sketchbooks
From the Collection and Community

LUAG Main Gallery, Zoellner Arts Center &
The South Bethlehem Greenway

www.luag.org


pennsylvania
COUNCIL ON THE ARTS



 | Lehigh University
Art Galleries



ANDREA JONES. *Crying in Vain*, 2021. Graphite, Digital.

"Drawing is the implementation of ideas."

- Andrea Jones



KEITH HARING. *Free South Africa*, 1985. Offset-Lithograph on glazed poster paper. Gift of the Keith Haring Foundation. LUZ 12 1001

THINKING THROUGH DRAWING

Works on Paper, Drawings & Sketchbooks
From the Collection and Community

LUAG Main Gallery, Zoellner Arts Center &
The South Bethlehem Greenway

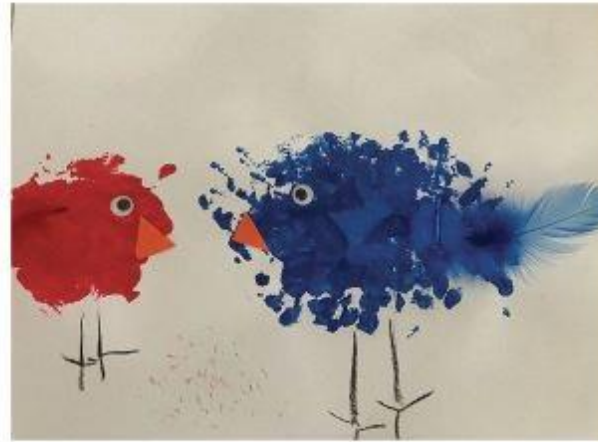
www.luag.org



LUAG | Lehigh University
Art Galleries



RAMON CARULLA, *Un Pájaro Intelectual*, 2007.
Pen and ink drawing on paper. Gift of the artist.
LUG 10 1051



POLETTE A. DORMAN, *2 Birds*, 2021. Paper, watercolor and feather.

"Drawing is fun!"

-Polette A. Dorman

THINKING THROUGH DRAWING

Works on Paper, Drawings & Sketchbooks
From the Collection and Community



Scan the
QR code on
your phone
to learn
more

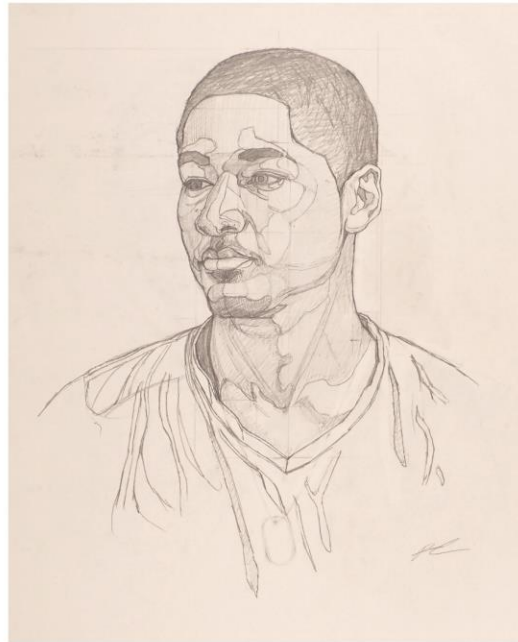
LUG Main Gallery, Zoellner Arts Center &
The South Bethlehem Gateway
www.lug.org



DAVON PROVIDENCE. *Grandma*, 2016. Acrylic Paint.

"Drawing is expressing how you feel."

- Davon Providence



ARTURO CABRERA. *Gabriel (Preliminary Drawing for Third Dimension)*, 2013. Graphite on paper. Gift of Christine Isabelle Oaklander, Ph.D. In Memory of Ricardo Viera. LUG 2020 1002 A

THINKING THROUGH DRAWING

Works on Paper, Drawings & Sketchbooks
From the Collection and Community

LUAG Main Gallery, Zoellner Arts Center &
The South Bethlehem Greenway

www.luag.org



Point the
camera on
your phone
here to learn
more!



LUAG | Lehigh University
Art Galleries

"All drawings start with one single line."

- Thania Inoa De Jesus



THANIA INOA DE JESUS. *Mamá*, 2018. Graphite on paper.



HENRI MATISSE. *Tête de Femme*, 1952. India ink on paper.
Gift of the Gary M. Bloom Estate in Memory of G. William Wolfston '43.
LUG 2016 1105

THINKING THROUGH DRAWING

Works on Paper, Drawings & Sketchbooks
From the Collection and Community

LUAG Main Gallery, Zoellner Arts Center &
The South Bethlehem Greenway

www.luag.org


pennsylvania
COUNCIL ON THE ARTS

Point the
camera on
your phone
here to learn
more!



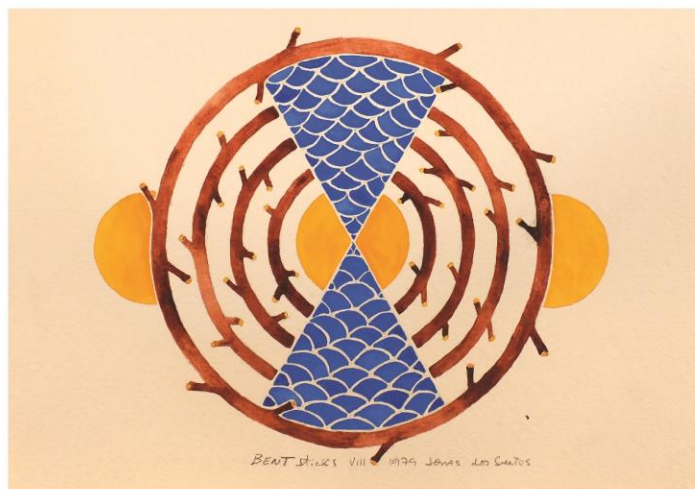
 | Lehigh University
Art Galleries

"Drawing is putting things down on paper."

-Elena Yerrington



ELENA YERRINGTON. *Whimsy*, 2021. Paper and alcohol markers.



JONAS DOS SANTOS. *Bent Sticks VIII*, 1979. Watercolor. Gift of the artist. LUG 97 1002

THINKING THROUGH DRAWING

Works on Paper, Drawings & Sketchbooks
From the Collection and Community

LUAG Main Gallery, Zoellner Arts Center &
The South Bethlehem Greenway
www.luag.org



LUAG | Lehigh University
Art Galleries