

Map of the South Bethlehem Greenway



1a.



Peter Turnley. *Salon Rosado de la Tropical Benny Moré, Habana, Cuba*, 2005. Archival pigment print. Gift of Anush and Vicki Parkh. LUF 2018 1003.

WHAT  
MATTERS  
**MOST**

Hear Kassie Hilgert, President  
and CEO of ArtsQuest, discuss  
Connection & Well-Being



SCAN ME

VISIT THE EXHIBITION

[WWW.LUAG.ORG](http://WWW.LUAG.ORG)
[@LUARTGALLERIES](#)


**Lehigh University  
Art Galleries**

THANK YOU TO OUR SPONSORS




1b.



Janice Lipzin. *Faces of the Southside*, Teen Photography Program, 2010/2015. Archival digital print, AP. Gift of Janice Lipzin. LUF 2016 1079.

**WHAT MATTERS MOST**

Hear Janine Carambot Santoro, Director of Equity and Inclusion for the City of Bethlehem, discuss **Representing Diverse Stories and People in our Community**

[www.luag.org](#)
[@LUARTGALLERIES](#)

**Lehigh University Art Galleries**

THANK YOU TO OUR SPONSORS

2a.



Henry Horenstein. *Bluegrass Music Fans*, Berryville Bluegrass Festival, VA, 1994. Gelatin silver print, edition 2/25. Gift of George Stephanopoulos. LUF 2017 1367.

**WHAT MATTERS MOST**

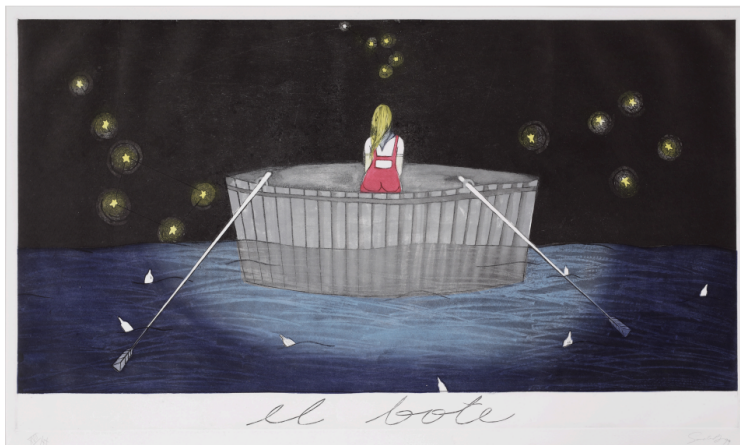
Hear Ramona LaBarre of Godfrey Daniels discuss **Making Community through Music**

[www.luag.org](#)
[@LUARTGALLERIES](#)

**Lehigh University Art Galleries**

THANK YOU TO OUR SPONSORS

2b



Sandra Ramos Lorenzo. *El Bote (The Boat)*, 1994. Color etching on paper, XVI/XX. Fine Art Endowment Purchase, LUG 02 1009.

**WHAT MATTERS MOST**

Hear Dr. Christopher Liang, Professor at Lehigh University, discuss **Addressing Trauma**

SCAN ME

[WWW.LUAG.ORG](http://www.LUAG.ORG)
[f](https://www.facebook.com/LUARTGALLERIES)
[t](https://twitter.com/LUARTGALLERIES)
[@LUARTGALLERIES](https://www.instagram.com/LUARTGALLERIES)

**VISIT THE EXHIBITION**

**LUAG** Lehigh University Art Galleries

THANK YOU TO OUR SPONSORS

3a, vertical



Keith Haring. *Untitled*, 1997. Offset lithograph. Gift of the Keith Haring Foundation, LUZ 12 1006.

**WHAT MATTERS MOST**

Hear Andrew Po, Owner of HomeBase Skateshop, discuss **Mentorship and Guidance**

SCAN ME

[WWW.LUAG.ORG](http://www.LUAG.ORG)
[f](https://www.facebook.com/LUARTGALLERIES)
[t](https://twitter.com/LUARTGALLERIES)
[@LUARTGALLERIES](https://www.instagram.com/LUARTGALLERIES)

**VISIT THE EXHIBITION**

**LUAG** Lehigh University Art Galleries

THANK YOU TO OUR SPONSORS



### 3b. vertical



Liliana Porter: Conversation with Bear, 1997. Chromochrome. Anna Elizabeth Wilson Fine Arts Endowment, LUF 01 1003.

WHAT  
**MATTERS  
MOST**

Hear Lisa Jordan, Managing Director  
of Touchstone Theatre, discuss **The  
Importance of Listening**

SCAN ME

VISIT THE EXHIBITION

WWW.LUAG.ORG  
@LUARTGALLERIES

Lehigh University  
**LUAG Art Galleries**

THANK YOU TO OUR SPONSORS

pennsylvania  
ARTS

### 4a.



Romare Bearden. Carolina Memory (Tidings), 1971-1972. Screenprint on paper, 48"X25". Gift of Argosy Partners and Bond Street Partners. LUG 80 1006.

WHAT  
**MATTERS  
MOST**

Hear Melanie Lino, Founder /  
Baker of Made by Lino/Lit Coffee  
Roastery and Bakeshop, discuss  
**Reconnecting to the Land**

SCAN ME

VISIT THE EXHIBITION

WWW.LUAG.ORG  
@LUARTGALLERIES

Lehigh University  
**LUAG Art Galleries**

THANK YOU TO OUR SPONSORS

pennsylvania  
ARTS



4b.

Levi Stoumen. *Farmers Market, Bethlehem*, 1939. Gelatin silver print. Fine Art Photography Endowment Purchase. LUP 63 1031.

**WHAT MATTERS MOST**

Hear Yadiria Colon Lopez, Director of Community Action Development Corporation of Bethlehem, discuss Creating Community

VISIT THE EXHIBITION [WWW.LUAG.ORG](http://WWW.LUAG.ORG) [f](https://www.facebook.com/luartgalleries) [t](https://twitter.com/luartgalleries) [i](https://www.instagram.com/luartgalleries) [y](https://www.youtube.com/luartgalleries)

**LUAG** | Lehigh University Art Galleries

THANK YOU TO OUR SPONSORS

5a.

Edmund Blampied. *The Sick Man*, 1921. Drypoint on paper. Gift of Robert Rosenbaum '43. LUG 62 5043.

**WHAT MATTERS MOST**

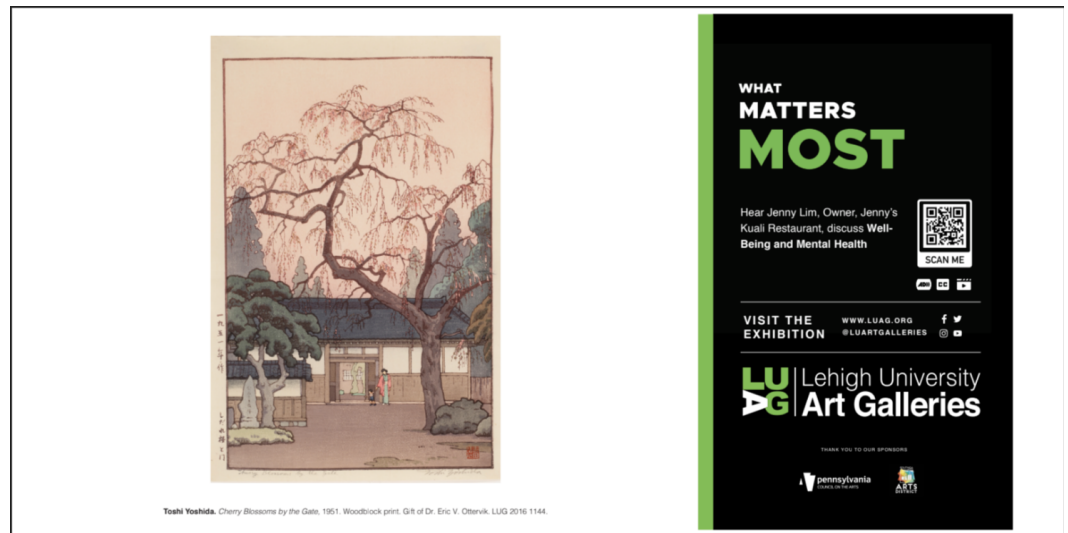
Hear Eric Ruth, Co-Founder and CEO of Kelyyn Foundation, discuss Promoting Individual and Collective Health

VISIT THE EXHIBITION [WWW.LUAG.ORG](http://WWW.LUAG.ORG) [f](https://www.facebook.com/luartgalleries) [t](https://twitter.com/luartgalleries) [i](https://www.instagram.com/luartgalleries) [y](https://www.youtube.com/luartgalleries)

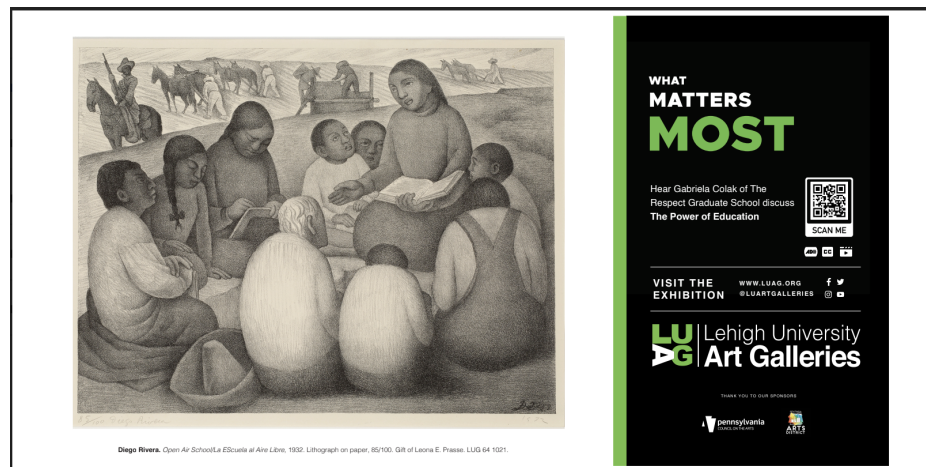
**LUAG** | Lehigh University Art Galleries

THANK YOU TO OUR SPONSORS

5b.



6a.



6b.



Bill Peters, *Riots in Denver-Whites and Blacks March Down Street...*, 1968. Vintage ferrotyped gelatin silver print. Gift of George and Alexandra Stephanopoulos, LUF 2019 1531.

## WHAT MATTERS MOST

Hear Dr. Floyd Beachum, Professor at Lehigh University, discuss Education To Support A Better Democracy



SCAN ME

VISIT THE EXHIBITION

WWW.LUAG.ORG  
@LUARTGALLERIES



**LUAG** Lehigh University Art Galleries

THANK YOU TO OUR SPONSORS



7a.



Lou Stoumen, *Children, East Los Angeles*, 1947. Gelatin silver print. Gift of George Stephanopoulos, LUF 2017 1480.

## WHAT MATTERS MOST

Hear Winston Alzbie, Chief Executive Officer of Boys and Girls Club of Bethlehem, discuss Housing Insecurity & Transiency for Families in Bethlehem



SCAN ME

VISIT THE EXHIBITION

WWW.LUAG.ORG  
@LUARTGALLERIES



**LUAG** Lehigh University Art Galleries

THANK YOU TO OUR SPONSORS



7b.



Patrick Heron, *January 1973 - 18*, 1973. Screenprint on paper, edition 19/72. Gift of Mrs. Sanford Robertson, LUG 80 1021.

## WHAT MATTERS MOST

Hear Dr. Julie Miwa, Associate Professor of Neuroscience at Lehigh University, discuss The Creative Process



SCAN ME

VISIT THE EXHIBITION

WWW.LUAG.ORG  
@LUARTGALLERIES



**LUAG** Lehigh University Art Galleries

THANK YOU TO OUR SPONSORS





8a.

Garry Winogrand, *Untitled (Fountain in Central Park)*, c. 1970 (printed 1981), Gelatin silver print, 55/80. Gift of Paul Cohen and Eddie Sutton, LUF 05.1195.

WHAT  
**MATTERS  
 MOST**

Hear Ian Panyko, Director of Café  
 The Lodge, discuss Achieving  
 One's Best Quality of Life

SCAN ME

VISIT THE  
 EXHIBITION

[WWW.LUAG.ORG](http://WWW.LUAG.ORG)
[f](#)
[t](#)

**LUAG** | Lehigh University  
**Art Galleries**

THANK YOU TO OUR SPONSORS

8b.

Joel Meyerowitz, *Balloon Beach*, Tunis, 1984, VintageChromogenic contact print, Gift of George Stephanopoulos, LUF 2015.1185.

WHAT  
**MATTERS  
 MOST**

Hear Erin Zeberlavage, Manager  
 of SouthSide Arts District, discuss  
 Friends, Family, Community

SCAN ME

VISIT THE  
 EXHIBITION

[WWW.LUAG.ORG](http://WWW.LUAG.ORG)
[f](#)
[t](#)

**LUAG** | Lehigh University  
**Art Galleries**

THANK YOU TO OUR SPONSORS

9a.

Janice Lipatin, *Musicians at the Senior Center, The Hispanic Center of the Lehigh Valley*, 2011 (printed 2015), Archival digital print, A/P, Gift of Janice Lipatin, LUF 2016.1077.

WHAT  
**MATTERS  
 MOST**

Hear Guillermo Lopez, Owner  
 of G-Pez Consulting, discuss  
 Embracing One's Identity

SCAN ME

VISIT THE  
 EXHIBITION

[WWW.LUAG.ORG](http://WWW.LUAG.ORG)
[f](#)
[t](#)

**LUAG** | Lehigh University  
**Art Galleries**

THANK YOU TO OUR SPONSORS

9b.



Bill Owens. *As President of the School Board there are Many Responsibilities...*, 1969-1975. Vintage gelatin silver print. Gift of George Stephanopoulos, LUF 2017 1426.

**WHAT MATTERS MOST**

Hear Dr. Jack Silva, Assistant Superintendent & Chief Academic Officer of Bethlehem Area School District, discuss **Community, Equity, Civic Service**

[www.luag.org](http://www.luag.org)
[f](#)
[t](#)

**VISIT THE EXHIBITION** @LUARTGALLERIES

**LUAG** | Lehigh University Art Galleries

THANK YOU TO OUR SPONSORS

10a.



Keith Haring. *Keith Haring for Emporium Capwell South of Market*, 1985. Offset-lithograph. Gift of the Keith Haring Foundation, LUZ 12 1021.

**WHAT MATTERS MOST**

Hear Scott Burden, Director of the Pride Center of Lehigh University, discuss **Social Justice and Equity**

[www.luag.org](http://www.luag.org)
[f](#)
[t](#)

**VISIT THE EXHIBITION** @LUARTGALLERIES

**LUAG** | Lehigh University Art Galleries

THANK YOU TO OUR SPONSORS

10b.



**Erika Stone.** *A Spirit Uplifted - Helping Each Other, Lexington Avenue, New York City, 1970's.* Vintage gelatin silver print. Gift of George Stephanopoulos, LUF 2017.1210.

## WHAT MATTERS MOST

Hear Rayah Levy, Founding  
Director of Esther M. Lee  
African-American Heritage  
Center, discuss **Participating  
in One's Community**



SCAN ME



VISIT THE  
EXHIBITION

WWW.LUAG.ORG  
@LUARTGALLERIES



**LUAG** | Lehigh University  
Art Galleries

THANK YOU TO OUR SPONSORS

